



LIZ MOAD'S
QUILLING
MASTERCLASS



Delicate Letters

LEARN HOW TO CREATE DETAILED SENTIMENTS
THAT HARNESS THE POWER OF CRAFT

The tenacious bumblebee is a symbol of personal power and strength – despite a lack of aerodynamics, they find a way to fly. A bee is a reminder for us to spread our wings and reach high for dreams. Combined with flowers and motivational messages, these pieces convey the spirit of freedom and strength. To make the letters stand out even more, the inner parts of the quilled words are shaded with chalk.

Happy quilling, Liz x



Essentials...

- ♥ Quilling papers: 3mm wide, orange, pink, white, yellow, black, blue
- ♥ Card: blue, white, orange, pink, cream
- ♥ Chalk: orange, pink
- ♥ Googly eyes, small
- ♥ Box frame, 18cm square
- ♥ Adhesives

Dreams Greeting

1 Print 'dreams come true' onto blue card, then write 'true' on scrap paper. Place this beneath the printed message and use an embossing tool to create an indent of 'true' beneath 'dreams come'. Fold a cream blank, 14cm x 18.5cm, then secure the blue panel to the front.

2 Glue two lengths of blue quilling paper together to create one strong piece. Carefully fix this along the outline of 'true' using only a tiny amount of glue. Take a small dry paintbrush and colour inside the letters with blue chalk.

3 Form a loose coil from a 40cm length of orange quilling paper, then pinch to a teardrop shape. Repeat until you have six petals, then fix in place to form a flower with a tight coil at the centre. Add two more flowers and embellish with extra coils and swirls.

4 For the bee, stick two lengths of yellow paper together end to end. Wind a loose closed coil, then wrap with black to form the bee's distinctive bands. Adhere two small googly eyes and two white teardrop shapes for wings. Fix in place to finish.



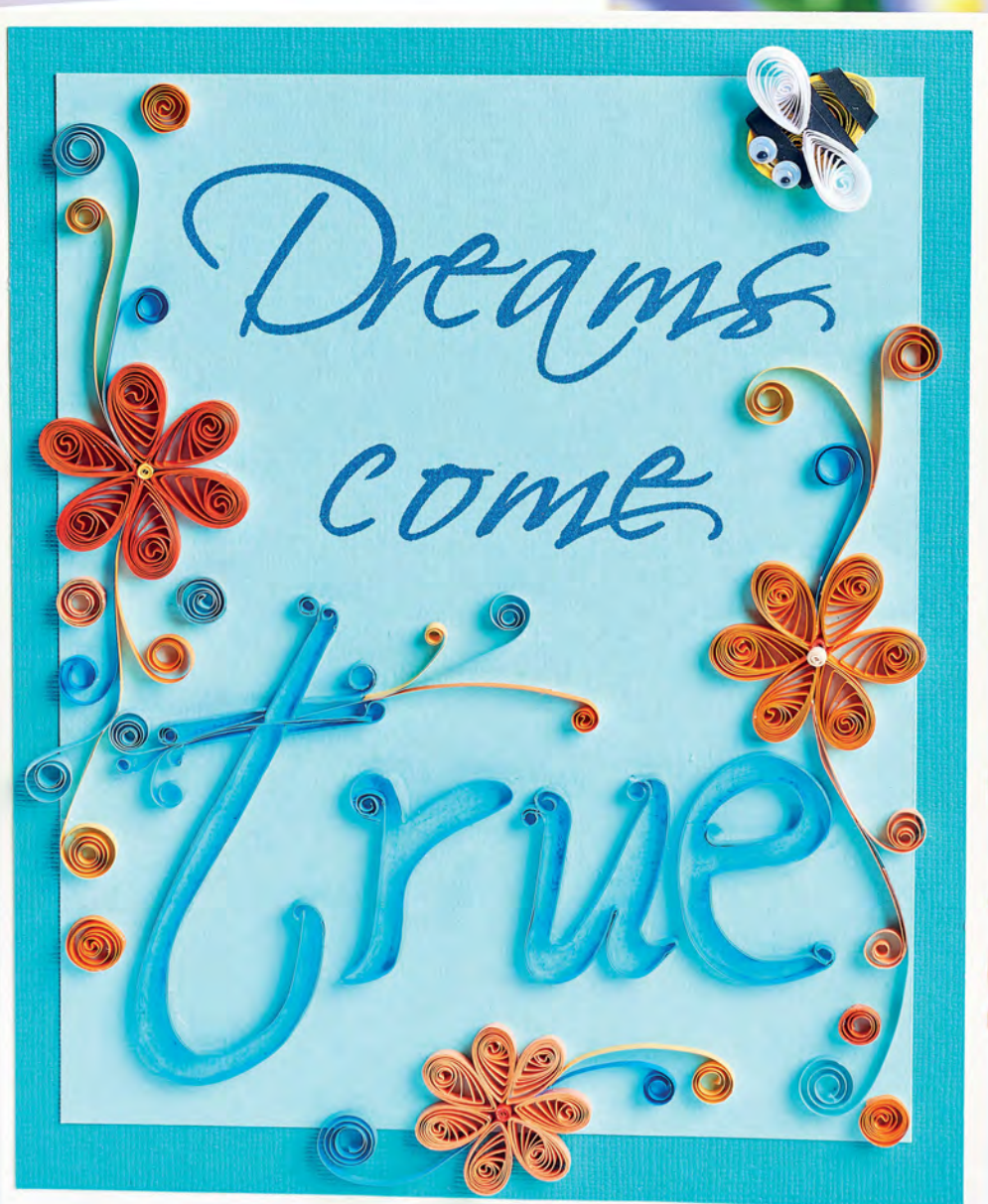
"You can download free fonts from the internet for printed words in any style you like"

Liz Moad, Designer

Make It Happen

1 Print 'make it happen' on white card, then use orange quilling paper to outline 'happen' below. Colour with orange chalk.

2 Make three flowers and three bees. Glue in place, adding open and closed coils as you go. Mount to orange card, then fix to a cream blank, 19cm square.



Motivational Message

1 Print 'seize the' onto card using blue ink. Colour 'day' with pink chalk, then outline with pink quilling paper.

2 Secure this in a white picture frame, then add three flowers and three bees. Fill any blank space with extra coils. **CB**

Craft savvy

If you're a keen calligrapher, you could use pen and ink to write the words instead of printing



Craft SHOP

BOX FRESH

A deep frame is ideal for displaying your quilled masterpieces! £7, wilko.com



BEAUTIFUL BRIGHTS

Re-create Liz's bright designs with quilling papers in sunset hues. From £1.85, jjquilling.co.uk

