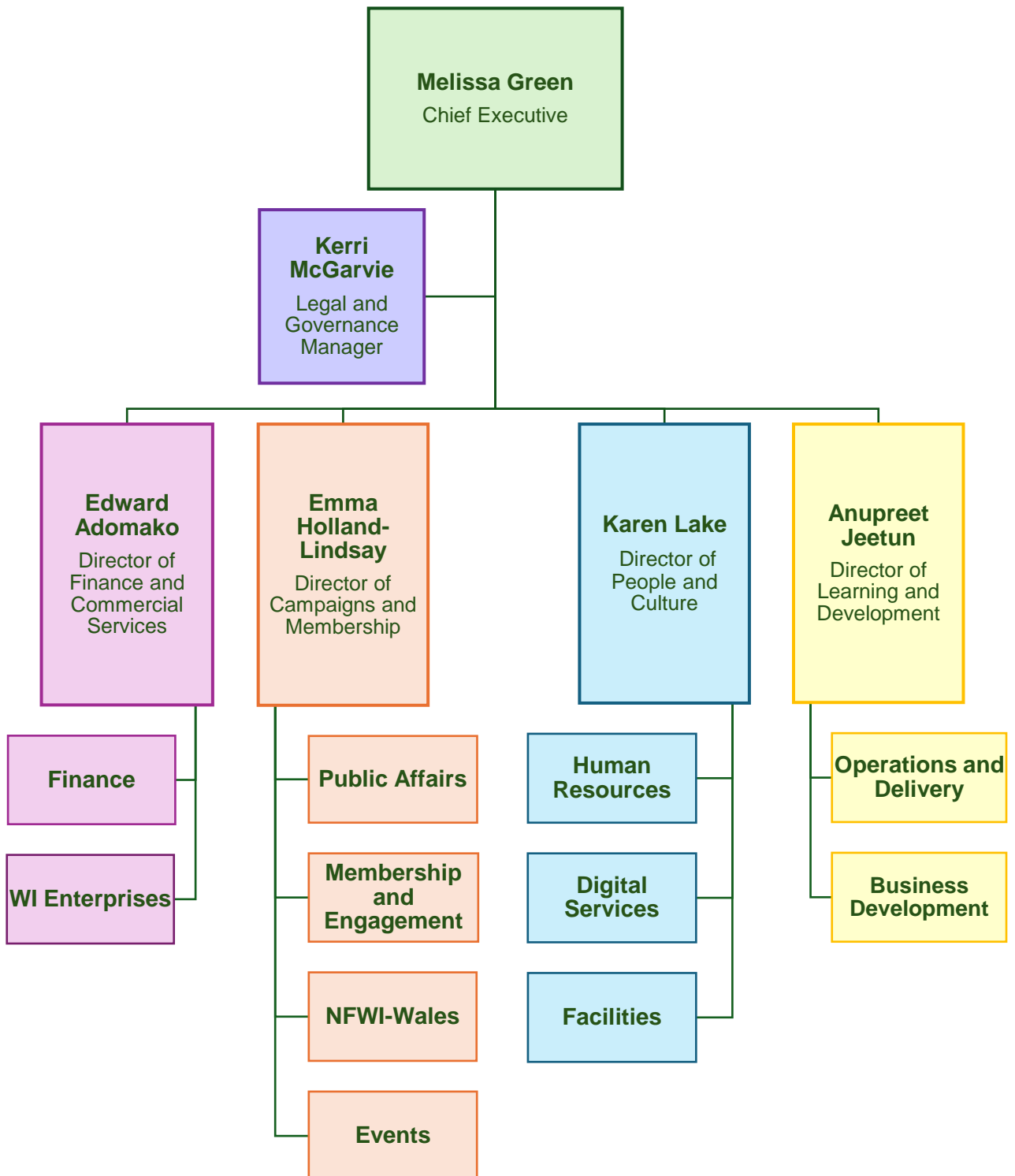


NFWI Structure and Staffing List as of December 2024



Finance and Commercial Services

Edward Adomako	Director of Finance and Commercial Services
Finance	
Thasha Ravennaath	Senior Finance Officer
Dawn Kent	Finance and Data Protection Support Officer
Kala Ratnakumar	Finance Officer
Erika Kaic	Finance Officer
Fundraising	
Phoebe Broad	Freelance Fundraising Executive
WI Enterprises	
Carlos Fialho	Interim Group Manager WIE
Jules Storer	Marketing and Project Assistant
Advertising	
Ian Armstrong	Interim Display Sales Manager
Shirley McGlynn	Display Sales Executive
Colm Cousins	Classified Sales Executive (fixed-term)
Editorial	
Megan Baffoe	Editorial Assistant
Sarah Drew Jones	Freelance Editor

Campaigns and Membership

Emma Holland-Lindsay	Director of Campaigns and Membership
Public Affairs	
Aanchal Mann	Campaigns and Public Affairs Manager
Tobias Arnø	Research and Campaigns Officer
Ellie Brain	Research and Campaigns Officer
	<i>Public Affairs Administrator (vacant)</i>
Membership and Engagement	
Joanna Rayner	Head of Membership and Engagement
Vicky Constantine-Foster	Membership Operations Manager
Juliet Isherwood	Membership Development Manager
Francesca Pal	Membership Support Officer
Charlotte Maughan	Membership Assistant
Rob Dyson	Freelance PR Consultant
NFWI-Wales	
Rhian Connick	Head of NFWI-Wales
Sarah Thomas	Public Affairs Officer
Lisa Howells	Events Coordinator
Hannah Battrick	Membership Development Officer (fixed-term)
	<i>Administrative Assistant (vacant)</i>
Events	
Kelly Rosser	Events Executive

People and Culture

Karen Lake	Director of People and Culture
Human Resources	
Andrea Mitchell	Lead HR Officer
Katie-Niamh Meehan	HR Coordinator
Digital Services	
Jason Douglas	Head of Digital Services
Alexandra Taufmann	Digital Content Editor
Olivia Li	Digital Assistant
Facilities	
Latel Monks	Facilities Manager
Kate Robinson	Facilities and Events Assistant

Learning and Development

Anupreet Jeetun	Director of Learning and Development
Emma Stenning	Committee Administrator
Dominique Walravens	Customer Support Assistant
Operations and Delivery	
Kelly Mauger	Education Operations Manager
Michelle Branch	Education Operations Officer
Business Development	
Helen Neal	Business Development Manager
Vaishnavi Pawar	Business Development Officer
Lucy Willis	Business Development Officer